





- 
3. Introduction
 4. Color Information
 5. Primary Logo - Full Color and One Color
 6. Secondary Logo - Stand Alone Shield - Full Color and One Color
 7. Secondary Logo - Radford "R" - Full Color and One Color
 8. Secondary Logo - Highlander - Full Color
 9. Word Mark - Radford Arched - Full Color and One Color
 10. Word Mark - Radford - Full Color and One Color
 11. Word Mark - Highlanders - Full Color and One Color
 12. Sport Specific Word Marks - One Color
 13. Uniform Assets - Word Marks
 14. Uniform Assets - Word Marks
 15. Uniform Assets - Word Marks
 16. Uniform Assets - Acceptable Logos
 17. Uniform Assets - Numbers
 18. Uniform Assets - Examples
 19. Minimum Size Requirements - Embroidery
 20. Typography
 21. Area of Isolation
 22. Common Misuse
 23. Contact Information
- 



is comprised of a system of closely related marks including a primary logo, secondary logos, word marks and sport specific marks. This guide details the usage of all components within the identity system.

This guide is intended as a resource for both internal departments as well as external vendors who apply the athletics identity. It was created to help ensure consistent use of all logos across a wide variety of application. The following pages should be considered official policy of Radford University related to all use and reproduction of it's athletics identity.

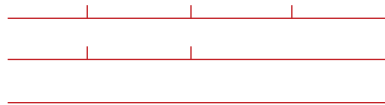
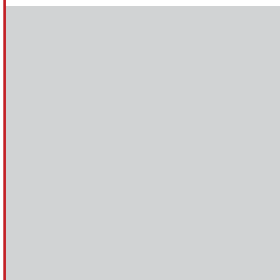
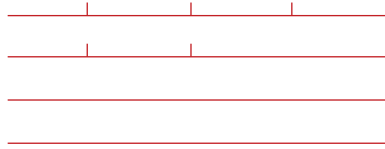
All logos included within this guide are property of Radford University. Any use without consent is strictly prohibited.

For additional information or for further clarification regarding anything in this guide, please contact:

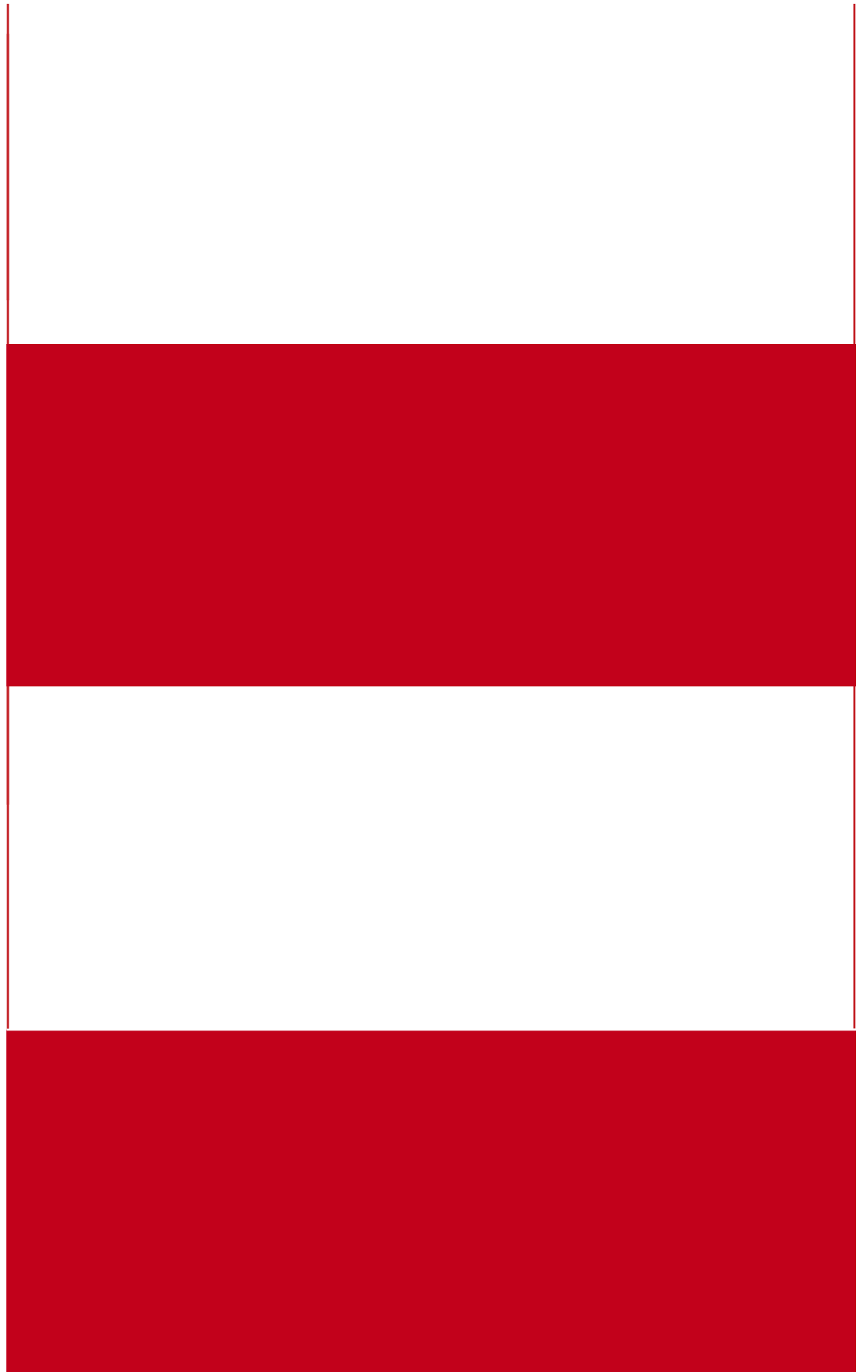
P.O. Box 6913
Radford, Virginia 24142
(540)-831-6423

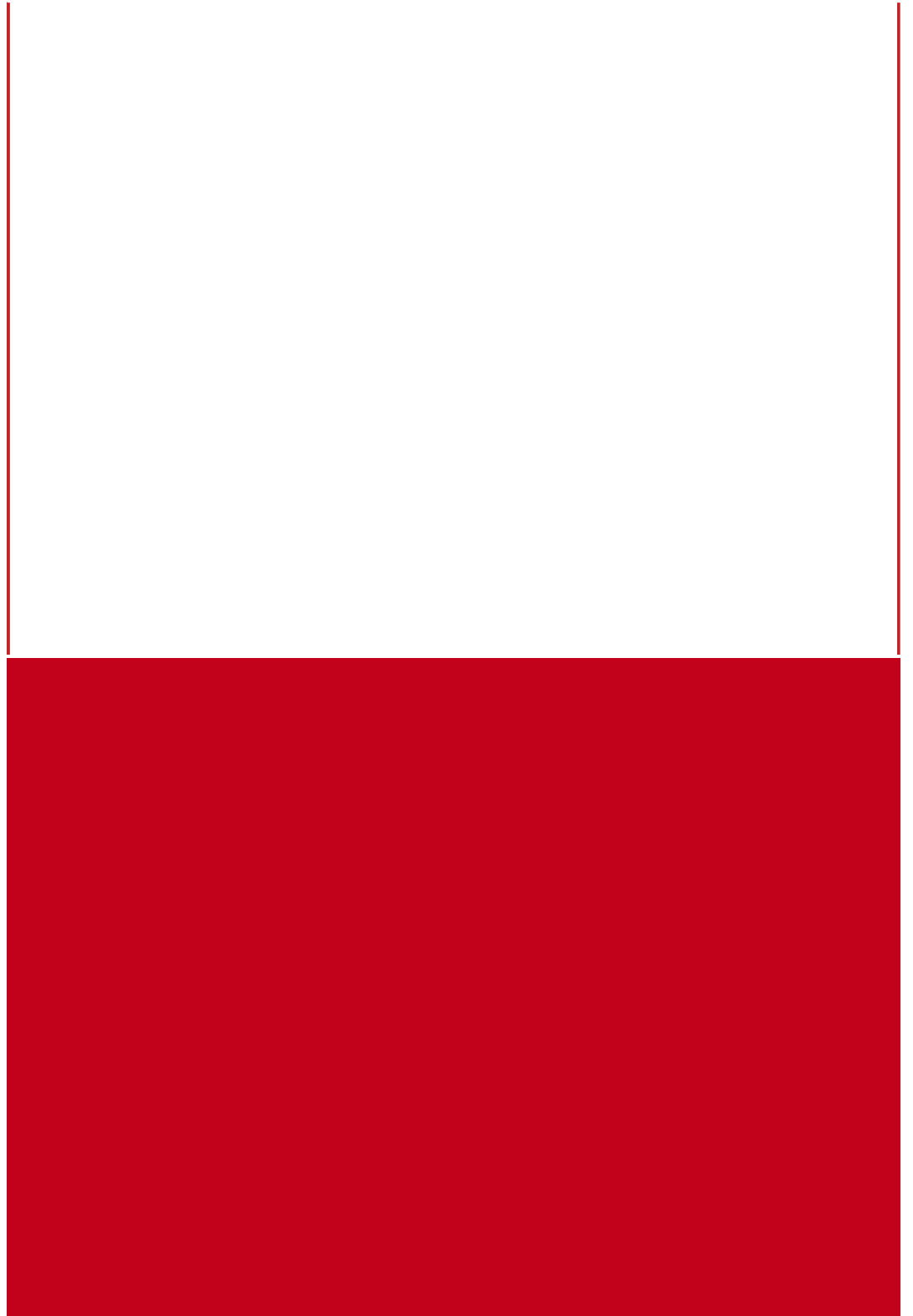
www.radfordathletics.com













RADFORD

RADFORD

RADFORD

RADFORD

I L E



ORD

RADFORD

RADFORD

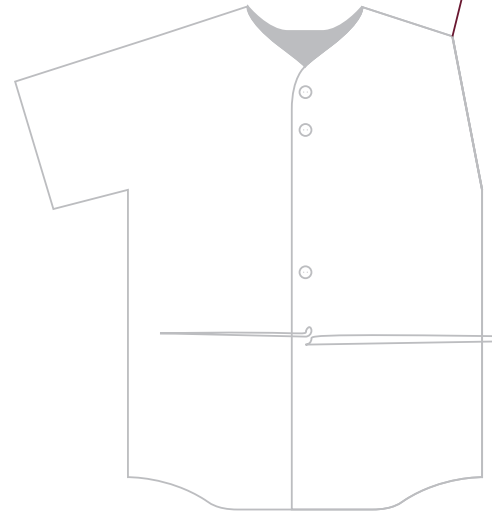
RADFORD



9

9


9



DF







P.O. Box 6913
Radford, Virginia 24142
(540)-831-6423

www.radfordathletics.com

